

ASPEN Stainless hardworking stainless steel products for hardwearing environments:  
British engineered with a lifetime guarantee.

## Product Description

The standard Galvanised Circular Protection Bollard can be positioned at doorways, corners and vulnerable locations in any factory to protect the building from collision damage.

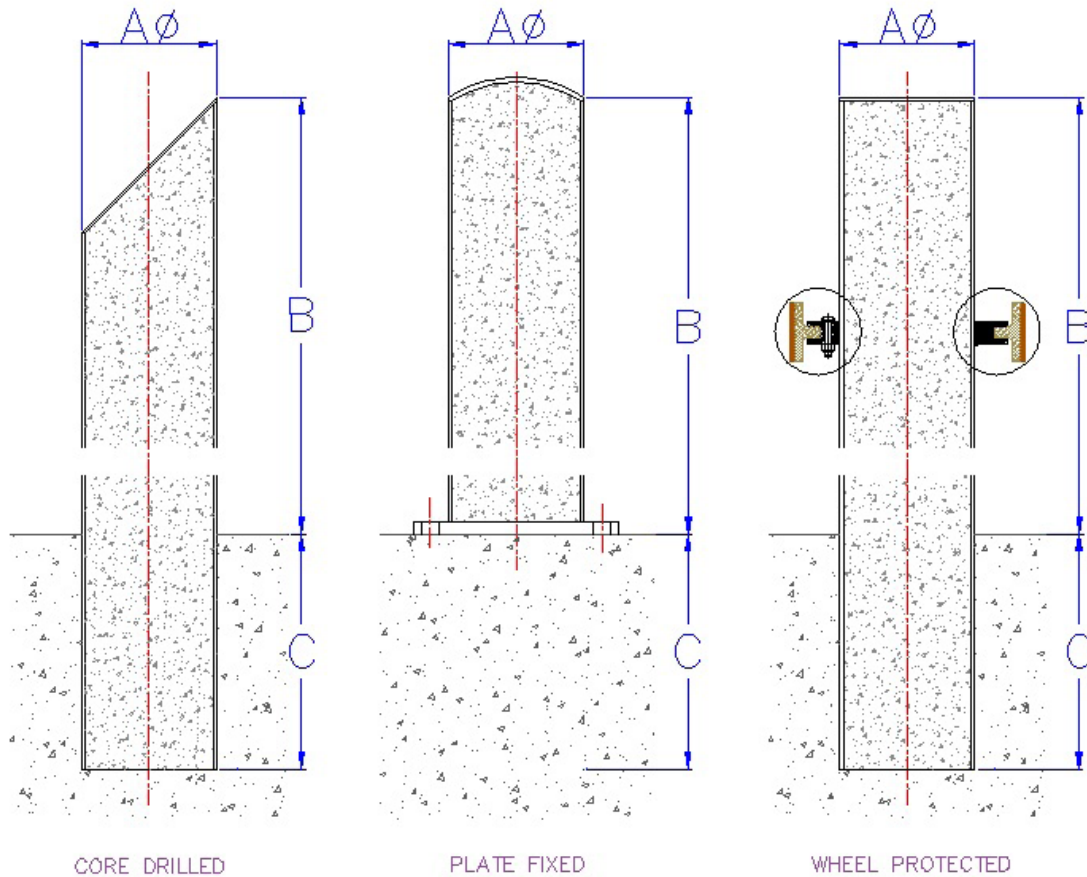
Suitable for use in hygienic environments.

The Bollard is available in one standard size.

## Technical Specification

- > 139mm with 5mm wall galvanised mild steel tube.
- > Core drilled.
- > 10mm galvanised steel plate if plate fixed.
- > British Galvanised Standard BS EN ISO 1461:2009.
- > Manufactured to BS6180 standard.

MODEL	REF	PROTECTION DIMENSIONS		
		A	B	C
BOLLARD 139	MSBOLL139	139	1000/ VARIABLE	150/ VARIABLE



The blue measurements indicate the variable dimensions shown in the chart above. All dimensions in mm.

# ASPEN Galvanised Circular Protection Bollard



ASPEN Stainless hardworking stainless steel products for hardwearing environments: British engineered with a lifetime guarantee.

## ASPEN Protection System

As the UK based designer and manufacturer of all ASPEN Stainless, Canal Engineering is able to offer a full range of products to complete your protection system and can customize any of its Units or manufacture complete bespoke protection systems.

### Key Benefits

The bollard range provides hygienic solutions to most applications and a total design, manufacture and installation service to ensure maximum protection from day to day contact.

### Maintenance

Stainless steel equipment should be occasionally thoroughly checked for retained deposits and concentrated fluid build up that causes corrosion.

### Cleaning

Many factors affect the choice of cleaning method and frequency of its application. Suitable methods for stainless steel are: water and steam; mechanical non abrasive scrubbing; organic solvents and mild detergents.

## ASPEN Protection Installation

Canal Engineering offer supply only or full installation, with fully welded and polished joints, and commissioning. Canal Engineering also offer on-going annual inspection and maintenance contracts.

For advice regarding the most suitable ASPEN Stainless for you please contact our technical sales team today to discuss your requirements.



Protection Bollard (dome top) and Protection Bollard with 30° top with wheel Sample

## ASPEN Protection Options

- > The Bollard can be plate fixed instead of core drilled.
- > Three different top options: 30° angled, domed or flat.
- > Bollard can be concrete filled.
- > Can be manufactured with a side wheel (see drawing).

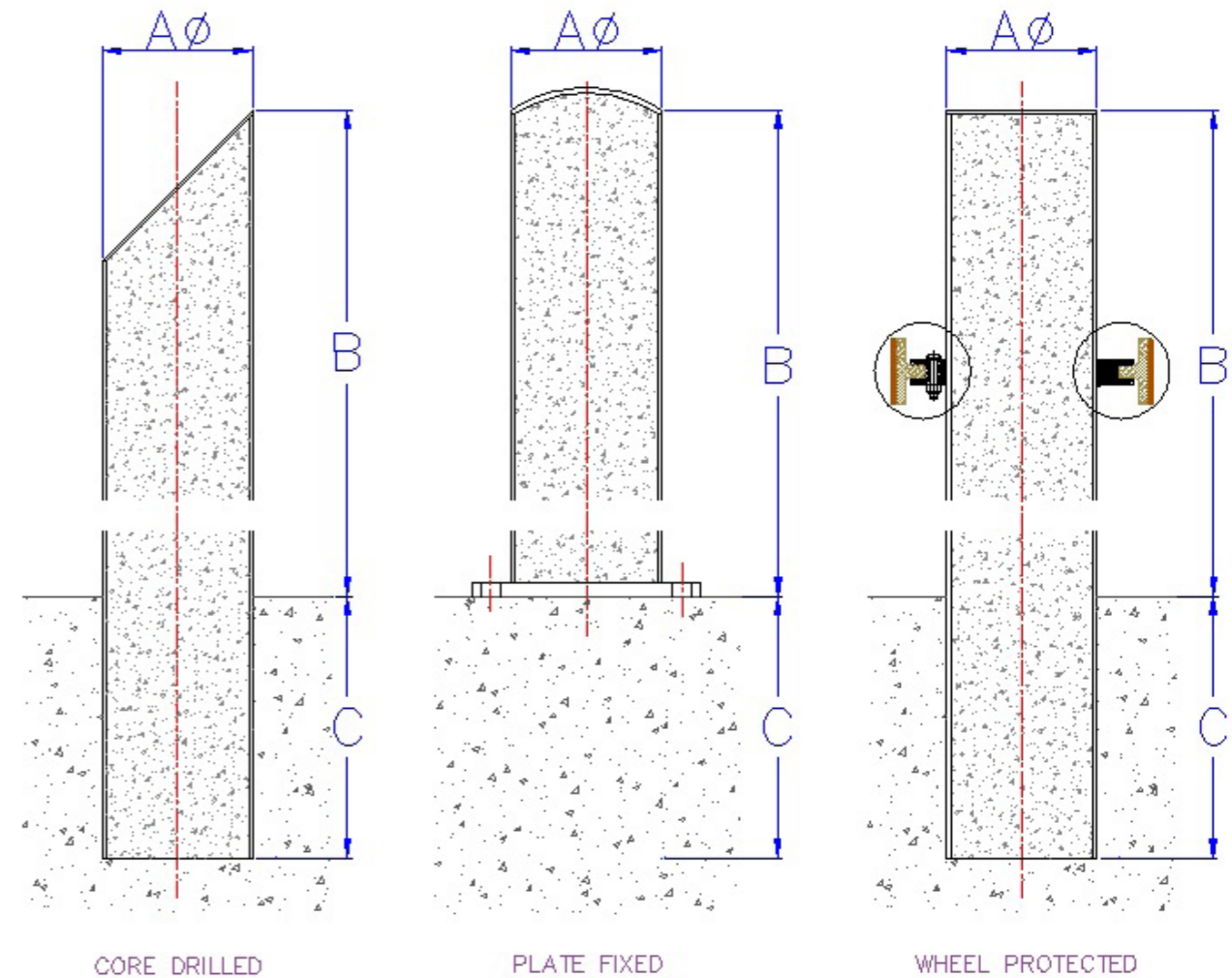
# ASPEN Galvanised Circular Protection Bollard



## Order Form

Please fill out the following table and return to the ASPEN Technical Sales team; [aspens@canalengineering.co.uk](mailto:aspens@canalengineering.co.uk)

MODEL	REF	OPTION 1	OPTION 2		OPTION 3			OPTION 4	QUANTITY
		MATERIAL	FIXING	CHOICE OF TOP	EXTRAS				
		MILD STEEL GALV	CORE DRILLED	PLATE FIXED	DOME	FLAT	30 DEGREE ANGLE	WHEEL	
139	MSBOLL139								



## ASPEN Protection Installation

Canal Engineering offer supply only or full installation, with fully welded and polished joints, and commissioning. Canal Engineering also offer on-going annual inspection and maintenance contracts.

For advice regarding the most suitable ASPEN Stainless for you please contact our technical sales team today to discuss your requirements.

