

ASPEN Stainless Circular Protection Bollard



ASPEN Stainless hardworking stainless steel products for hardwearing environments:
British engineered with a lifetime guarantee.

Product Description

The standard Stainless Circular Protection Bollard can be positioned at doorways, corners and vulnerable locations in any factory to protect the building from collision damage.

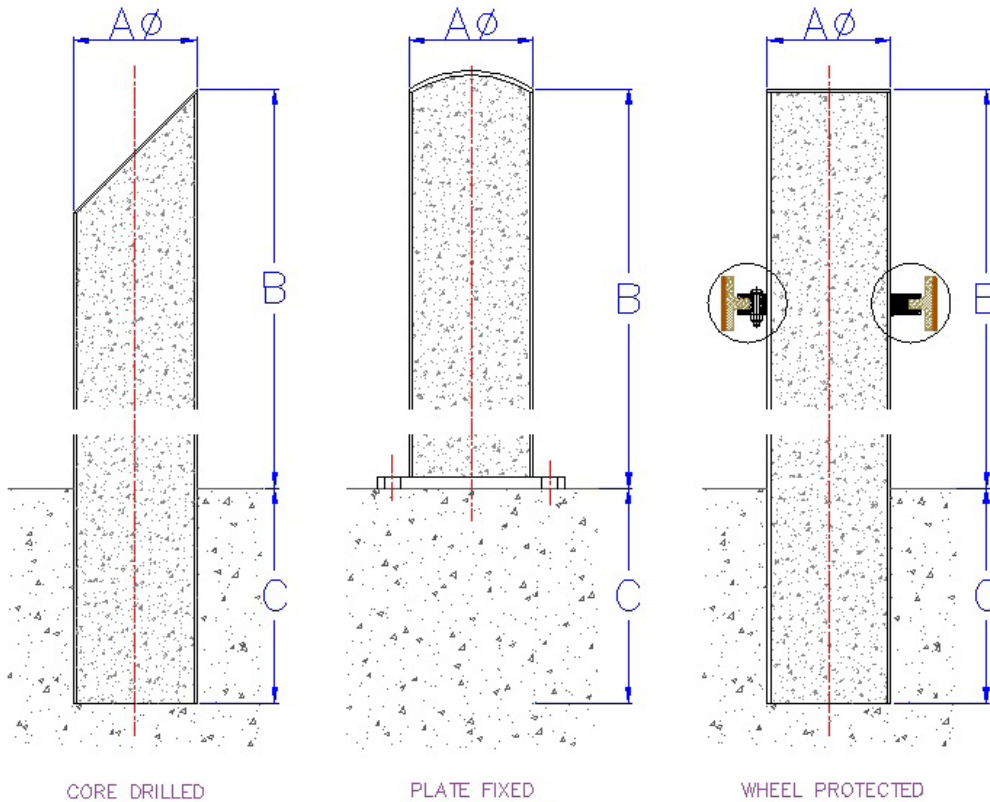
Suitable for use in hygienic environments.

The Bollard is available in two standard sizes.

Technical Specification

- > 100mm or 114 mm with 3mm wall stainless steel tube.
- > Core drilled.
- > 10mm stainless steel plate if plate fixed.
- > Grade 304 stainless steel (British Standard 304S31, Euronorm 1.4301).
- > Manufactured to BS6180 standard.

MODEL	REF	PROTECTION DIMENSIONS		
		A	B	C
BOLLARD 100	SSBOLL100	100	1000/ VARIABLE	150/ VARIABLE
BOLLARD 114	SSBOLL114	114	1000/ VARIABLE	150/ VARIABLE



The blue measurements indicate the variable dimensions shown in the chart above. All dimensions in mm.



ASPEN Stainless Circular Protection Bollard



ASPEN Stainless hardworking stainless steel products for hardwearing environments: British engineered with a lifetime guarantee.

ASPEN Protection System

As the UK based designer and manufacturer of all ASPEN Stainless, Canal Engineering is able to offer a full range of products to complete your protection system and can customize any of its Units or manufacture complete bespoke protection systems.

Key Benefits

The bollard range provides hygienic solutions to most applications and a total design, manufacture and installation service to ensure maximum protection from day to day contact.

Maintenance

Stainless steel equipment should be occasionally thoroughly checked for retained deposits and concentrated fluid build up that causes corrosion.

Cleaning

Many factors affect the choice of cleaning method and frequency of its application. Suitable methods for stainless steel are: water and steam; mechanical non abrasive scrubbing; organic solvents and mild detergents.

ASPEN Protection Installation

Canal Engineering offer supply only or full installation, with fully welded and polished joints, and commissioning. Canal Engineering also offer on-going annual inspection and maintenance contracts.

For advice regarding the most suitable ASPEN Stainless for you please contact our technical sales team today to discuss your requirements.



Protection Bollard (dome top) and Protection Bollard with 30° top with wheel Sample

ASPEN Protection Options

- > The Bollard can be plate fixed instead of core drilled.
- > Three different top options: 30° angled, domed or flat.
- > Bollard can be concrete filled.
- > Can be manufactured with a side wheel (see drawing).

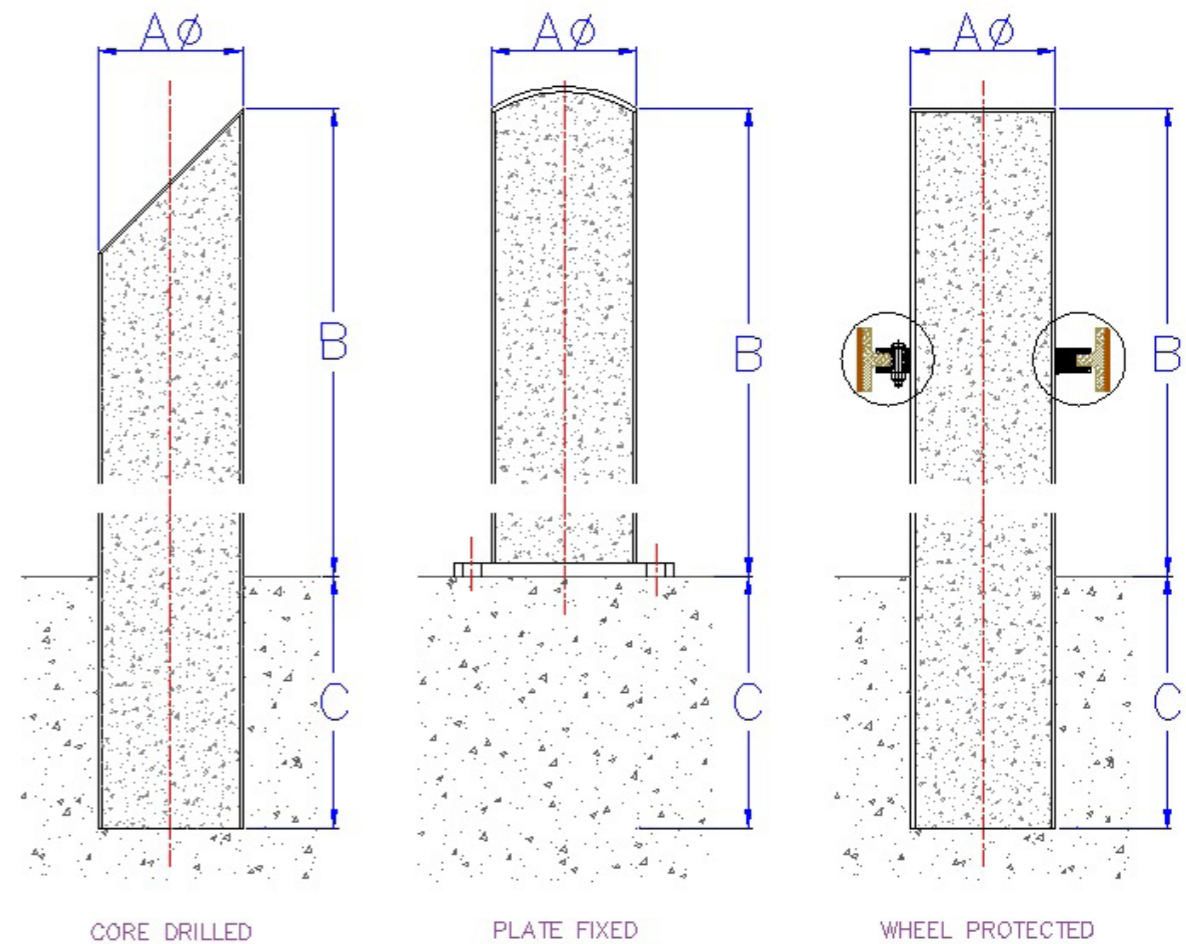
ASPEN Stainless Circular Protection Bollard



Order Form

Please fill out the following table and return to the ASPEN Technical Sales team; aspens@canalengineering.co.uk

MODEL	REF	OPTION 1	OPTION 2		OPTION 3			OPTION 4	QUANTITY
		MATERIAL	FIXING		CHOICE OF TOP			EXTRAS	
		STAINLESS STEEL	CORE DRILLED	PLATE FIXED	DOME	FLAT	30 DEGREE ANGLE	WHEEL	
100	SSBOLL100								
114	SSBOLL114								



ASPEN Protection Installation

Canal Engineering offer supply only or full installation, with fully welded and polished joints, and commissioning. Canal Engineering also offer on-going annual inspection and maintenance contracts.

For advice regarding the most suitable ASPEN Stainless for you please contact our technical sales team today to discuss your requirements.

