

ASPEN Round Vinyl Floor Flaine Gully

Load Class up to FACTA B125



Stainless

ASPEN Stainless hardworking stainless steel products for hardwearing environments: British engineered with a lifetime guarantee.




Product Description

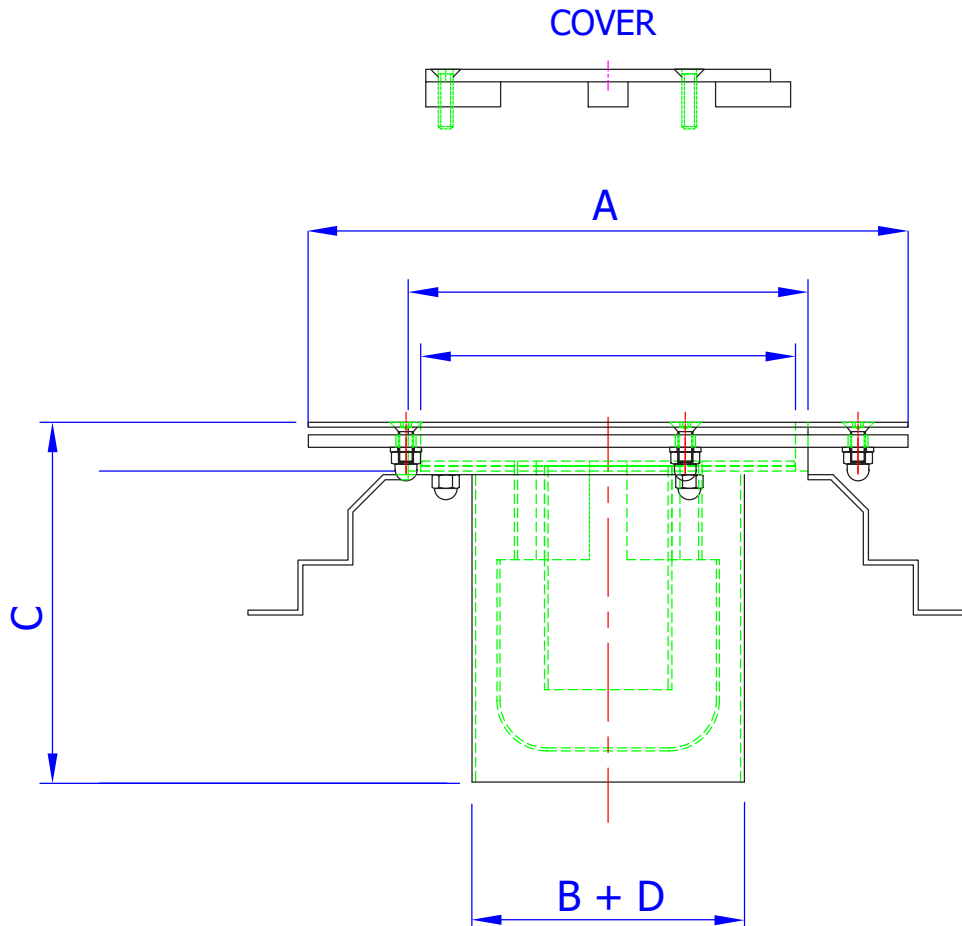
This Round Vinyl Floor Bottom Outlet Gully is generally used for small volumes of water collecting sink and condense waste, and has a bead blasted finish with easy access for Rodding.

Suitable for hygienic environments accessed by light load factory traffic.

Technical Specification

- > Stainless steel plate in 1.5mm and 2mm.
- > 50mm water trap.
- > Round top Gully with slotted cover.
- > Grade 304 stainless steel (British Standard 304S31, Euronorm 1.4301)
- > Compliant with EHEDG guidelines

MODEL	REF	GULLY DIMENSIONS				FACTA LOAD CLASS
		A	B	C	D	
SIDE OUTLET	DGBO110	240	110	145	110	 B



All dimensions in mm.



ASPEN Round Vinyl Floor Flaine Gully

Load Class up to FACTA B125



ASPEN Stainless hardworking stainless steel products for hardwearing environments: British engineered with a lifetime guarantee.

ASPEN Drainage System

As the UK based designer and manufacturer of all ASPEN Stainless, Canal Engineering is able to offer a full range of products to complete your drainage system and can customize any of its Units or manufacture complete bespoke drainage systems.

Key Benefits

The Delta gully is a direct replacement for the traditional pot or clay road gully therefore utilising traditional design with modern materials.

Maintenance

Stainless steel equipment should be occasionally thoroughly checked for retained deposits and concentrated fluid build up that causes corrosion.

Cleaning

Many factors affect the choice of cleaning method and frequency of its application. Suitable methods for stainless steel are: water and steam; mechanical non abrasive scrubbing; organic solvents and mild detergents.

ASPEN Drainage Installation

Canal Engineering offer supply only or full installation, with fully welded and polished joints, and commissioning. Canal Engineering also offer on-going annual inspection and maintenance contracts.

For advice regarding the most suitable ASPEN Stainless for you please contact our technical sales team today to discuss your requirements.

ASPEN Drainage Options

- > Available in grade 316 stainless steel (British Standard 316S31, Euronorm 1.4401).
- > A range of Gully Covers (see TD35).
- > Locking Gully Cover.
- > Gully Membrane Flange Disc (see TD66).
- > Gully Cover lifting tools.
- > Variable filtration mesh hole size.
- > Back inlet pipe available in three different sizes.
- > Gully basket.

