

# ASPEN Heel Guard Drain Cover

## Load Class up to FACTA B



Stainless

ASPEN Stainless hardworking stainless steel products for hardwearing environments: British engineered and sealed with a lifetime guarantee.





### Product Description

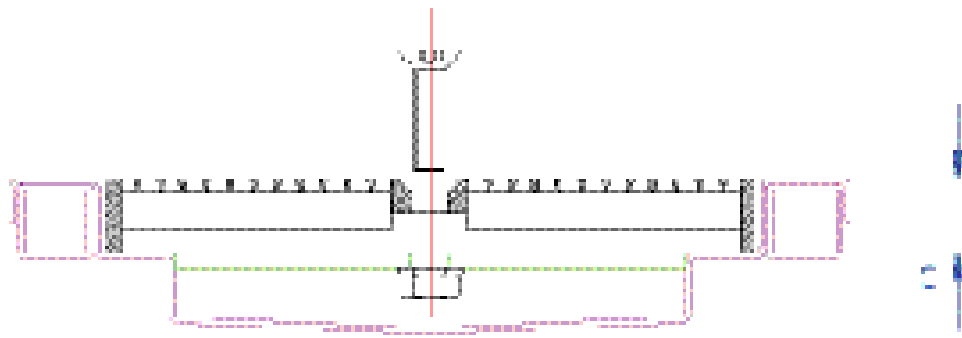
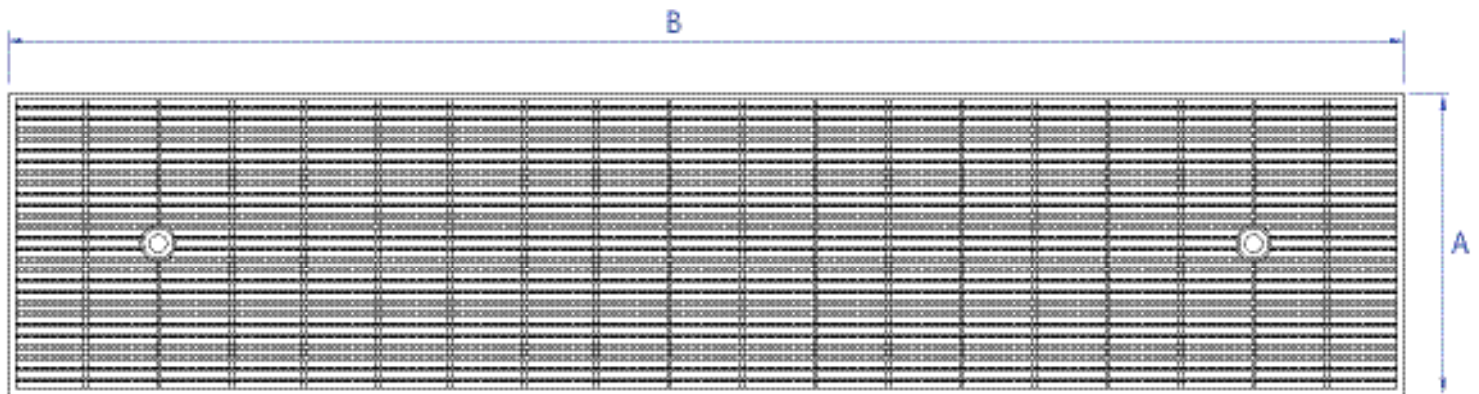
The HD Heel guard Drain Cover is manufactured in 996mm standard lengths or suitable for the drainage system design. Size B would be altered to fit the length of the Channel and mitred to compensate angled corners in the system.

Suitable for environments accessed by pedestrians and medium load size factory traffic.

### Technical Specification

- > 5.5mm Linear Gaps, 10x10 square bar
- > 26mm depth to fit either Drain Channel.
- > Available in Grade 304 & 316 stainless steel
- > Low Slip Potential according to UKSRG in dry & wet conditions.
- > EHEDG can be achieved with alterations

MODEL	REF	COVER DIMENSIONS			FACTA LOAD CLASS
		A	B	C	
HEEL GUARD 100	CC100HG	146	996	25	
HEEL GUARD 170	CC170HG	216	996	25	



The blue measurements indicate the variable dimensions shown in the chart above. All dimensions in mm.



+44 (0)115 986 6321  
 aspen@canalengineering.co.uk  
 www.aspen.eu.com

# ASPEN Heel Guard Drain Cover

## Load Class up to FACTA A15



ASPEN Stainless hardworking stainless steel products for hardwearing environments: British engineered and sealed with a lifetime guarantee.

### ASPEN Drainage System

As the UK based designer and manufacturer of all ASPEN Stainless, Canal Engineering is able to offer a full range of products to complete your drainage system and can customize any of its Units or manufacture complete bespoke drainage systems.

#### Key Benefits

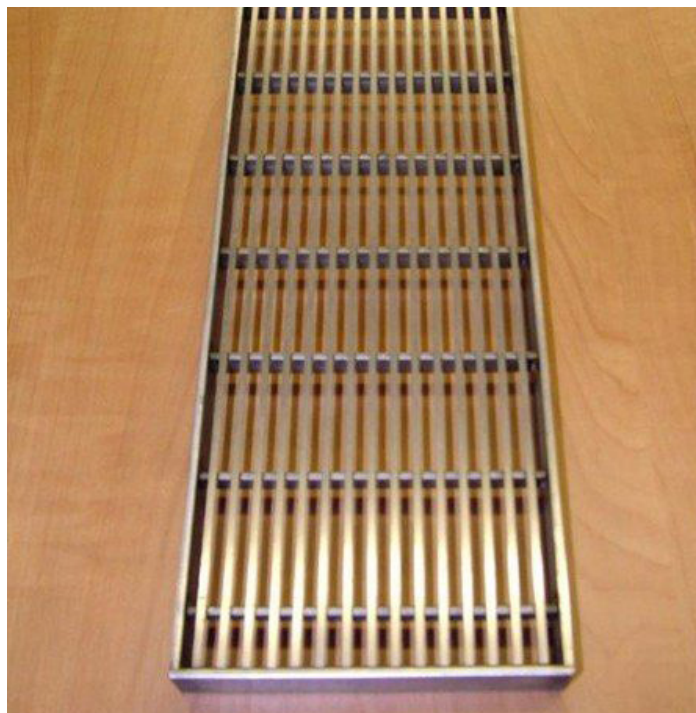
This style of drain cover provides maximum liquid drainage to the channel and provides a robust surface to withstand pedestrian and medium load size traffic on a daily basis.

#### Maintenance

Stainless steel equipment should be occasionally thoroughly checked for retained deposits and concentrated fluid build up that causes corrosion.

#### Cleaning

Many factors affect the choice of cleaning method and frequency of its application. Suitable methods for stainless steel are: water and steam; mechanical non abrasive scrubbing; organic solvents and mild detergents.



Heel Guard Cover Sample

### ASPEN Drainage Installation

Canal Engineering offer supply only or full installation, with fully welded and polished joints, and commissioning. Canal Engineering also offer on-going annual inspection and maintenance contracts.

For advice regarding the most suitable ASPEN Stainless for you please contact our technical sales team today to discuss your requirements.

### ASPEN Slip Resistance

Classification of slip potential surfaces in wet and dry conditions are according to 'The Assessment of Floor Slip Resistance: The UK Slip Resistance Group (UKSRG) Guidelines issues 4 / 2011'. Results are obtained from tests carried out by our trained laboratory technicians in the internal laboraboraty. All figures are measured and expressed under laboratory conditions: Actual performance may vary from the above values depending upon site conditions. Contact the Technical Sales team for the actual slip resistant values or more information about the UKSRG.

### ASPEN Drainage Options

- > Available in Grade 304 & 316 stainless steel
- > Cover can be bolted to the Channel to prevent movement.