

ASPEN Vertical Anti Backflow Valve

Load Class up to FACTA C250



Stainless

ASPEN Stainless hardworking stainless steel products for hardwearing environments:
British engineered with a lifetime guarantee.



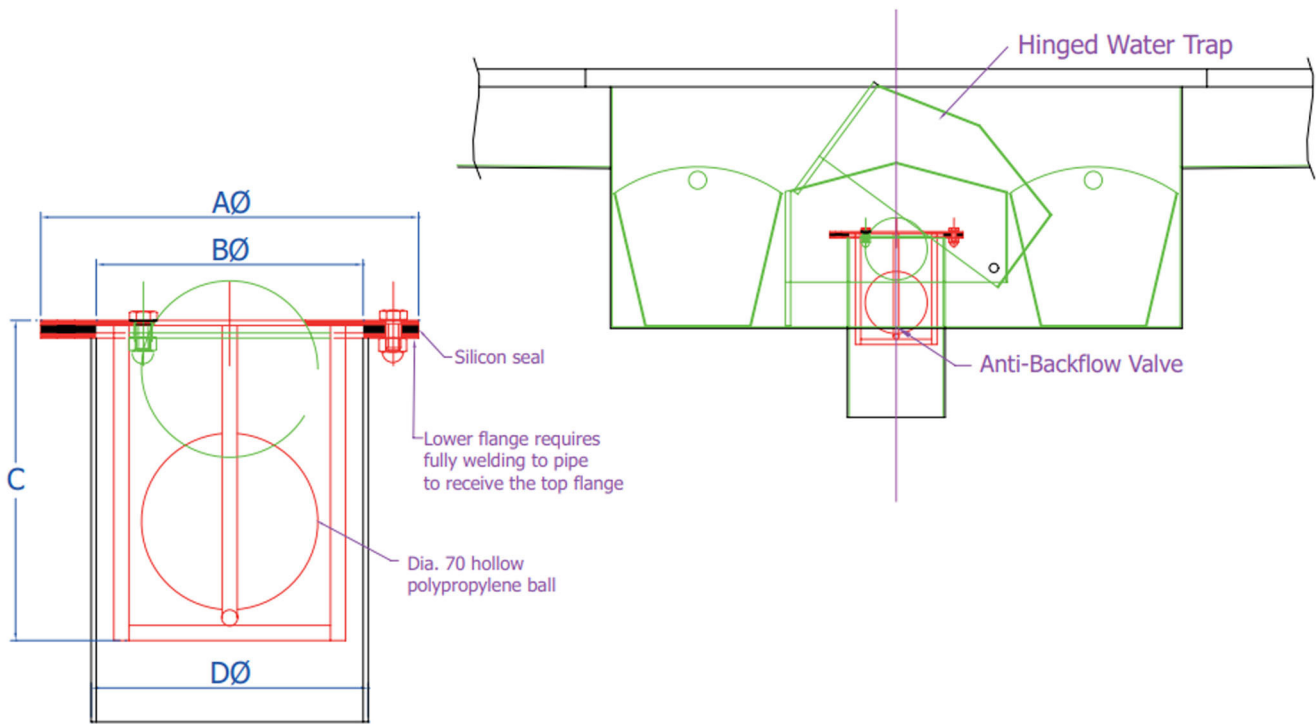
Product Description

The Standard Anti Backflow Valve is designed to close off the outlet to prevent foul water and debris returning into a gully or room.
Suitable for hygienic environments accessed by medium load factory traffic.
The Anti Backflow Valve is available in two sizes to accommodate different flow rates.

Technical Specification

- > 2mm stainless steel top plate.
- > 6mm stainless steel cage.
- > 3mm silicon seal.
- > 70mm diameter hollow polypropylene ball.
- > Grade 304 stainless steel (British Standard 304S31, Euronorm 1.4301).
- > Compliant with EHEDG guidelines

MODEL	REF	VALVE DIMENSIONS				FLOW RATES
		A	B	C	D	
VALVE 110	ABV110V	150	106	127	110	4.0 Ltr/Sec
VALVE 160	ABV160V	200	156	127	160	9.0 Ltr/Sec



The blue measurements indicate the variable dimensions shown in the chart above. All dimensions in mm.



ASPEN Vertical Anti Backflow Valve

Load Class up to FACTA C250



ASPEN Stainless hardworking stainless steel products for hardwearing environments: British engineered with a lifetime guarantee.

ASPEN Drainage System

As the UK based designer and manufacturer of all ASPEN Stainless, Canal Engineering is able to offer a full range of products to complete your drainage system and can customize any of its Units or manufacture complete bespoke drainage systems.

Key Benefits

The Valve is designed to eliminate the backflow of foul water and debris into a Gully or room.

Maintenance

Stainless steel equipment should be occasionally thoroughly checked for retained deposits and concentrated fluid build up that causes corrosion.

Cleaning

Many factors affect the choice of cleaning method and frequency of its application. Suitable methods for stainless steel are: water and steam; mechanical non abrasive scrubbing; organic solvents and mild detergents.



Vertical Anti Backflow Valve Sample

ASPEN Drainage Installation

Canal Engineering offer supply only or full installation, with fully welded and polished joints, and commissioning. Canal Engineering also offer on-going annual inspection and maintenance contracts.

For advice regarding the most suitable ASPEN Stainless for you please contact our technical sales team today to discuss your requirements.

ASPEN Drainage Options

- > Available in grade 316 stainless steel (British Standard 316S31, Euronorm 1.4401).
- > Suited for the ASPEN Gullies and Outlets