

# ASPEN Sealed Access Cover

## Load Class up to FACTA C250



ASPEN Stainless hardworking stainless steel products for hardwearing environments:  
British engineered with a lifetime guarantee.



### Product Description

The standard Sealed Access Cover is an adaptable unit to suit various environments or applications. It is usually concrete filled and topped with the relevant floor finish to match the surrounding area.

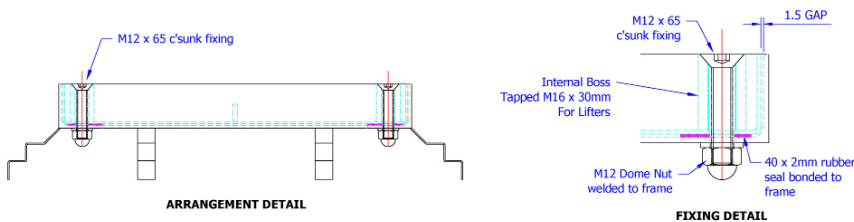
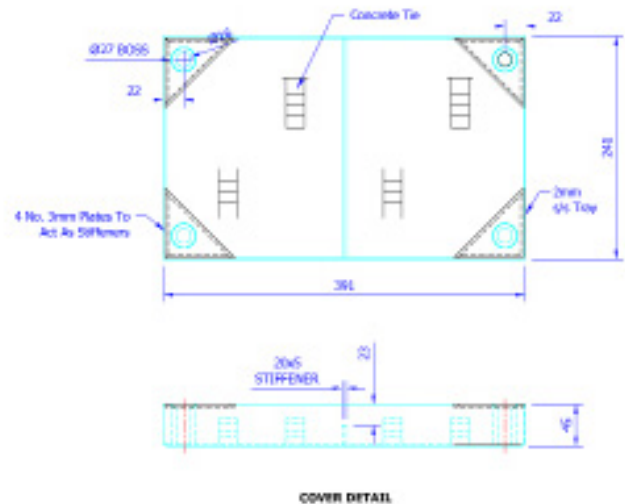
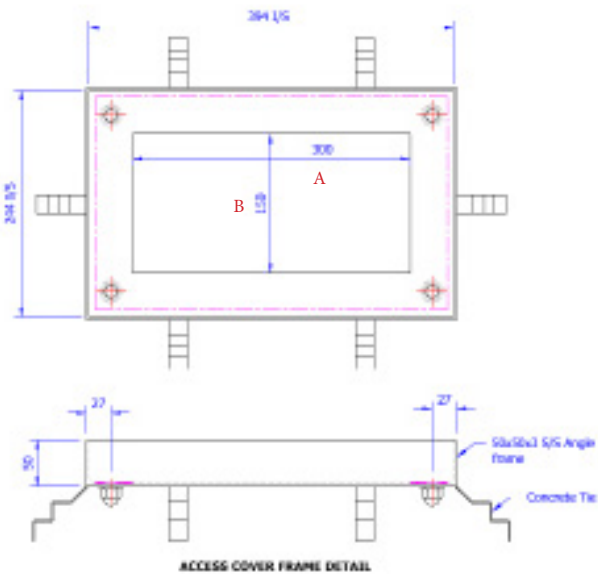
Suitable for hygienic environments that are accessed by medium load factory traffic.

The Sealed Access Cover is bespoke and is fabricated to aperture size A and B from customer details.

### Technical Specification

- > Outer frame: 50mm x 50mm x 3mm stainless steel.
- > Inner tray: 2mm stainless steel.
- > 2mm rubber seal bonded to frame.
- > Lifter  $\varnothing$ 10mm mild steel tee bar.
- > CSK fixing screw.
- > Grade 304 stainless steel (British Standard 304S31, Euronorm 1.4301).
- > 22mm Cover Depth for concrete, resin or tile.
- > Compliant with EHEDG guidelines

INTERNAL DIMENSIONS	REF	ACCESS COVER DIMENSIONS					FACTA LOAD CLASS
		OPENING DIMENSIONS		FRAME DIMENSIONS		SIDE DEPTH E	
		A	B	C	D		
300 x 150	SEALAC300	300	150	410	260	50	
BESPOKE	SEALAC	V	V	V	V	V	



\*The blue measurements indicate the variable dimensions shown in the chart above. All dimensions in mm. Variable (V).

# ASPEN Sealed Access Cover

## Load Class up to FACTA C250



ASPEN Stainless hardworking stainless steel products for hardwearing environments:  
British engineered with a lifetime guarantee.

### ASPEN Drainage System

As the UK based designer and manufacturer of all ASPEN Stainless, Canal Engineering is able to offer a full range of products to complete your drainage system and can customize any of its Units or manufacture complete bespoke drainage systems.

Load classification is only applicable when the Cover is filled with concrete. In other circumstances please seek technical advice.

#### Key Benefits

The Sealed Access Cover can be fabricated to the bespoke requirements of the user. The multi use cover is adaptable to suit various environments and can be filled with concrete and resin to provide an anti-slip surface.

#### Maintenance

Stainless steel equipment should be occasionally thoroughly checked for retained deposits and concentrated fluid build up that causes corrosion.

#### Cleaning

Many factors affect the choice of cleaning method and frequency of its application. Suitable methods for stainless steel are: water and steam; mechanical non abrasive scrubbing; organic solvents and mild detergents.

### ASPEN Drainage Installation

Canal Engineering offer supply only or full installation, with fully welded and polished joints, and commissioning. Canal Engineering also offer on-going annual inspection and maintenance contracts.

For advice regarding the most suitable ASPEN Stainless for you please contact our technical sales team today to discuss your requirements.

### ASPEN Drainage Options

- > Available in grade 316 stainless steel (British Standard 316S31, Euronorm 1.4401).
- > Available in any bespoke size to suit various requirements.