

# ASPEN Gully Drain Cover | Locking

Load Class up to FACTA C250



ASPEN Stainless hardworking stainless steel products for hardwearing environments:  
British engineered with a lifetime guarantee.



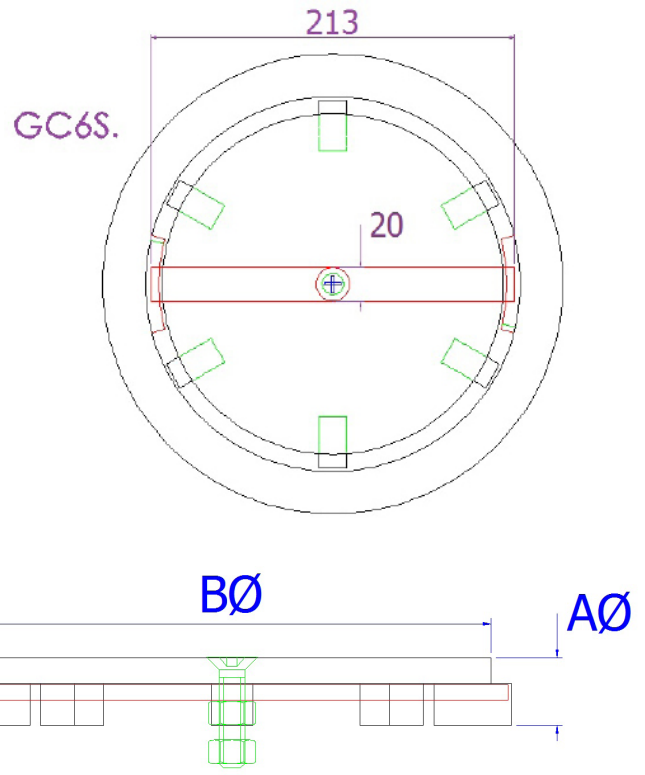
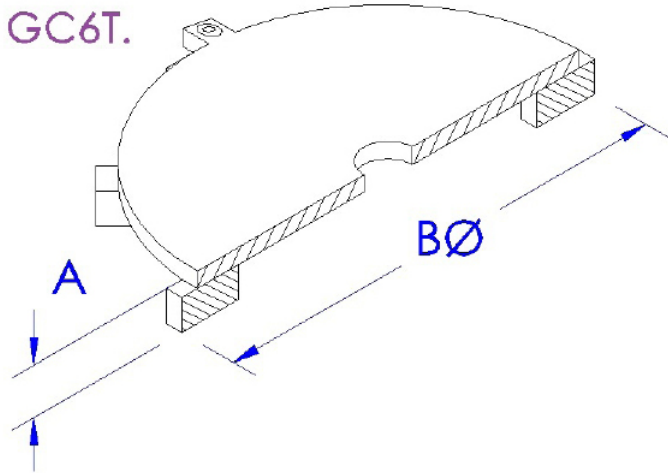
## Product Description

- GC1 - Smooth Gully Drain Cover
- GC2 - Durbar Gully Drain Cover
- GC3 - Ladder Gully Drain Cover
- GC4 - Scalloped Ladder Gully Drain Cover
- GC5 - Resin Filled Gully Drain Cover
- GC6 - Locking Gully Drain Cover
- GC7 - Laser Ladder Cut Gully Drain Cover

## Technical Specification

- > 16mm x 16mm stainless steel support bars.
- > 10mm stainless steel plate.
- > Summit Locking bar: 6mm stainless steel.
- > Stitch welded.
- > Available in Grade 304 or 316 stainless steel
- > Low Slip Potential according to UKSRG in dry & wet conditions.
- > Compliant with EHEDG guidelines

MODEL	REF	COVER DIMENSIONS			FACTA LOAD CLASS
		A	B	C	
LOCKING TIEHACK	GC6T	25	280	NA	
LOCKING SUMMIT	GC6S	25	200	NA	



All dimensions in mm.



+44 (0) 115 986 6321  
 aspen@canalengineering.co.uk  
 www.aspen.eu.com

# ASPEN Gully Drain Cover | Locking

## Load Class up to FACTA C250



ASPEN Stainless hardworking stainless steel products for hardwearing environments: British engineered with a lifetime guarantee.

### ASPEN Drainage System

As the UK based designer and manufacturer of all ASPEN Stainless, Canal Engineering is able to offer a full range of products to complete your drainage system and can customize any of its Units or manufacture complete bespoke drainage systems.

#### Maintenance

Stainless steel equipment should be occasionally thoroughly checked for retained deposits and concentrated fluid build up that causes corrosion.

#### Cleaning

Many factors affect the choice of cleaning method and frequency of its application. Suitable methods for stainless steel are: water and steam; mechanical non abrasive scrubbing; organic solvents and mild detergents.

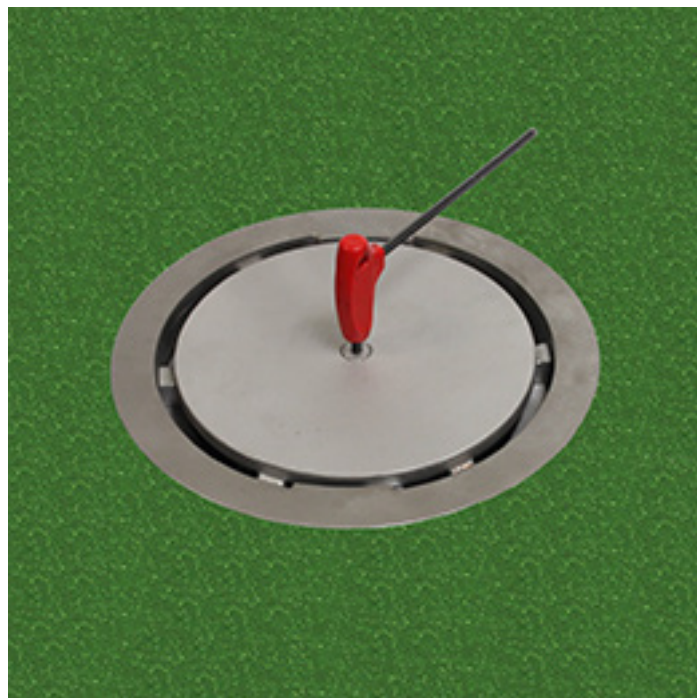
### ASPEN Drainage Installation

Canal Engineering offer supply only or full installation, with fully welded and polished joints, and commissioning. Canal Engineering also offer on-going annual inspection and maintenance contracts.

For advice regarding the most suitable ASPEN Stainless for you please contact our technical sales team today to discuss your requirements.

### ASPEN Slip Resistance

Classification of slip potential surfaces in wet and dry conditions are according to 'The Assessment of Floor Slip Resistance: The UK Slip Resistance Group (UKSRG) Guidelines issues 4 / 2011'. Results are obtained from tests carried out by our trained laboratory technicians in the internal laboraboraty. All figures are measured and expressed under laboratory conditions: Actual performance may vary from the above values depending upon site conditions. Contact the Technical Sales team for the actual slip resistant values or more information about the UKSRG.



Locking Gully Drain Cover for Summit Drain Gully

### ASPEN Drainage Options

> Available in Grade 304 or 316 stainless steel