

ASPEN Vinyl Flooring Drainage Channel

Load Class up to FACTA B125



Stainless

ASPEN Stainless hardworking stainless steel products for hardwearing environments:
British engineered with a lifetime guarantee.




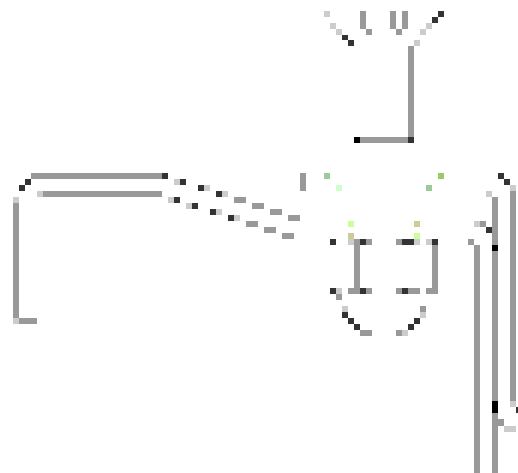
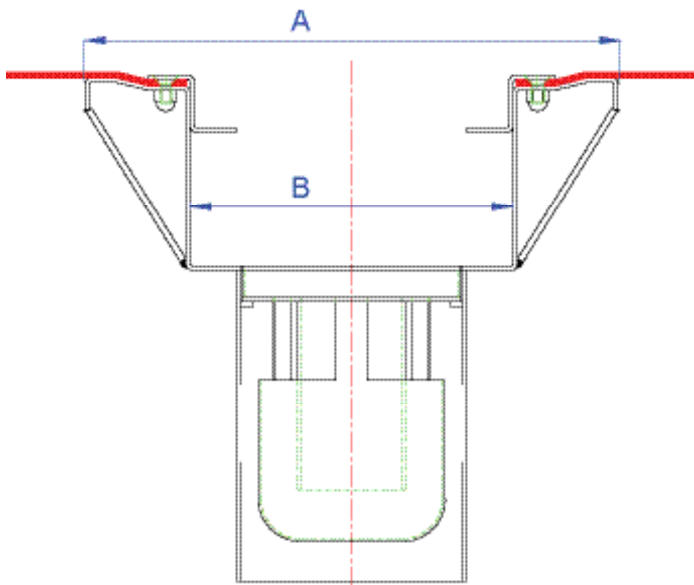
Product Description

The standard Vinyl Flooring Drainage Channel is manufactured in lengths suitable for the drainage system design. Cell bars are welded at one metre intervals in the inserts to prevent the drain covers from sliding. Suitable for hygienic environments accessed by medium load factory traffic.

Technical Specification

- > Made from 2mm stainless steel.
- > Grade 304 stainless steel (British Standard 304S31, Euronorm 1.4301).
- > Compliant with EHEDG guidelines

MODEL	REF	CHANNEL DIMENSIONS		CUT OUT DIMENSIONS		MINIMUM FALL	FACTA LOAD CLASS
		A	B	X	MIN Y		
DAVOS 100	DAVPL100	254	154	410	CHANNEL DEPTH + 100	1:150	 B



The blue measurements indicate the variable dimensions shown in the chart above. All dimensions in mm.



ASPEN Vinyl Floor Drainage Channel

Load Class up to FACTA B125



ASPEN Stainless hardworking stainless steel products for hardwearing environments: British engineered with a lifetime guarantee.

ASPEN Drainage System

As the UK based designer and manufacturer of all ASPEN Stainless, Canal Engineering is able to offer a full range of products to complete your drainage system and can customize any of its Units or manufacture complete bespoke drainage systems.

Key Benefits

The Davos plus range is medium duty profile with added strength in its profile for most light factory traffic environments. The simple design provides easy clean surfaces and a self draining fall slope and a box section infill for added strength and aids concrete infill.

Maintenance

Stainless steel equipment should be occasionally thoroughly checked for retained deposits and concentrated fluid build up that causes corrosion.

Cleaning

Many factors affect the choice of cleaning method and frequency of its application. Suitable methods for stainless steel are: water and steam; mechanical non abrasive scrubbing; organic solvents and mild detergents.



Vinyl Flooring Drainage Channel Samples

ASPEN Drainage Installation

Canal Engineering offer supply only or full installation, with fully welded and polished joints, and commissioning. Canal Engineering also offer on-going annual inspection and maintenance contracts.

For advice regarding the most suitable ASPEN Stainless for you please contact our technical sales team today to discuss your requirements.

ASPEN Drainage Options

- > Available in grade 316 stainless steel (British Standard 316S31, Euronorm 1.4401).
- > A range of ASPEN Drain covers to suit.
- > The Aspen Drain Covers will determine the Load Class of the Drainage Channel.
- > Additional Channel loops for installation in re-bar situations for a more secure fix. Measurements in mm.