

ASPEN Square Top Pancake Tiehack Gully

Load Class up to FACTA C250



Stainless

ASPEN Stainless hardworking stainless steel products for hardwearing environments:
British engineered with a lifetime guarantee.



Product Description

The Standard Pancake Tiehack Gully has a reduced height for shallow inverts, which is bead blasted with easy access for Rodding.

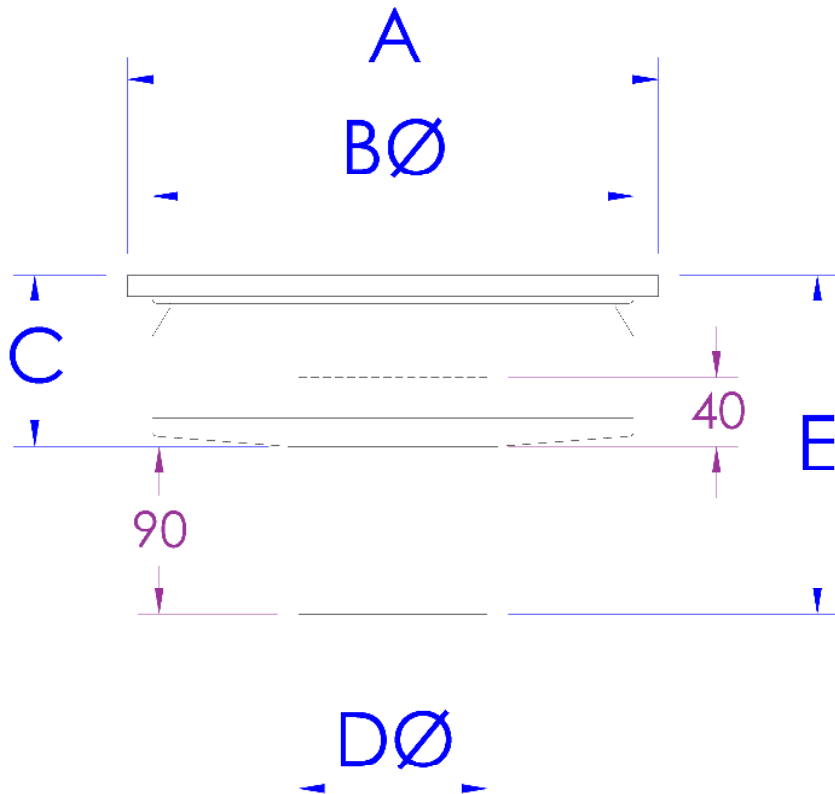
Suitable for hygienic environments accessed by medium load factory traffic.

The Pancake Gully is available in two sizes to accommodate different flow rates.

Technical Specification

- > Body: made from 1.2mm stainless steel.
- > Top: made from 10mm stainless steel.
- > Square top Gully with smooth cover.
- > Minimum 40mm water trap.
- > Grade 304 stainless steel (British Standard 304S31, Euronorm 1.4301)
- > EHEDG can achieved with alterations

MODEL	REF	GULLY DIMENSIONS					FLOW RATES	FACTA LOAD CLASS
		A	B	C	D	E		
PANCAKE 110	PGS110	310	281	100	110	190	4.0 - 5.0 Ltr/Sec	
PANCAKE 160	PGS160	310	281	100	160	190	8.0 Ltr/Sec	



The blue measurements indicate the variable dimensions shown in the chart above. All dimensions in mm.



ASPEN Square Top Pancake Tiehack Gully

Load Class up to FACTA C250



ASPEN Stainless hardworking stainless steel products for hardwearing environments: British engineered with a lifetime guarantee.

ASPEN Drainage System

As the UK based designer and manufacturer of all ASPEN Stainless, Canal Engineering is able to offer a full range of products to complete your drainage system and can customize any of its Units or manufacture complete bespoke drainage systems.

Key Benefits

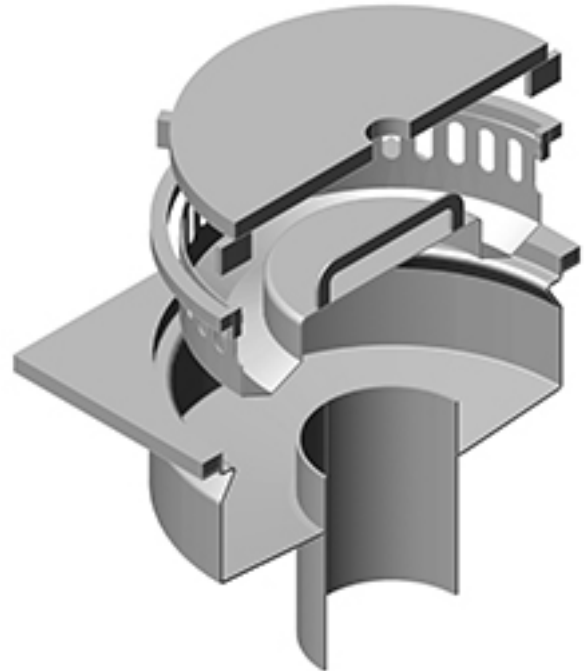
A versatile and popular gully with a smaller body for use in shallow invert positions for use in any area utilising a solid and well established design to provide maximum drainage and good filtration of solids.

Maintenance

Stainless steel equipment should be occasionally thoroughly checked for retained deposits and concentrated fluid build up that causes corrosion.

Cleaning

Many factors affect the choice of cleaning method and frequency of its application. Suitable methods for stainless steel are: water and steam; mechanical non abrasive scrubbing; organic solvents and mild detergents.



Square Top Pancake Tiehack Gully Sample

ASPEN Drainage Installation

Canal Engineering offer supply only or full installation, with fully welded and polished joints, and commissioning. Canal Engineering also offer on-going annual inspection and maintenance contracts.

For advice regarding the most suitable ASPEN Stainless for you please contact our technical sales team today to discuss your requirements.

ASPEN Drainage Options

- > Available in grade 316 stainless steel (British Standard 316S31, Euronorm 1.4401).
- > A range of Gully Covers (see TD35).
- > Locking Gully Cover.
- > Gully Membrane Flange (see TD66).
- > Gully Cover lifting tools.
- > Variable filtration mesh hole size.