

ASPEN Summit Gully Round Top For Vinyl Floor

Load Class up to FACTA C250



Stainless

ASPEN Stainless hardworking stainless steel products for hardwearing environments:
British engineered with a lifetime guarantee.



Product Description

The Standard Summit Gully is a general purpose Gully designed for use in most areas, which has a bead blasted finish with easy access for Rodding.

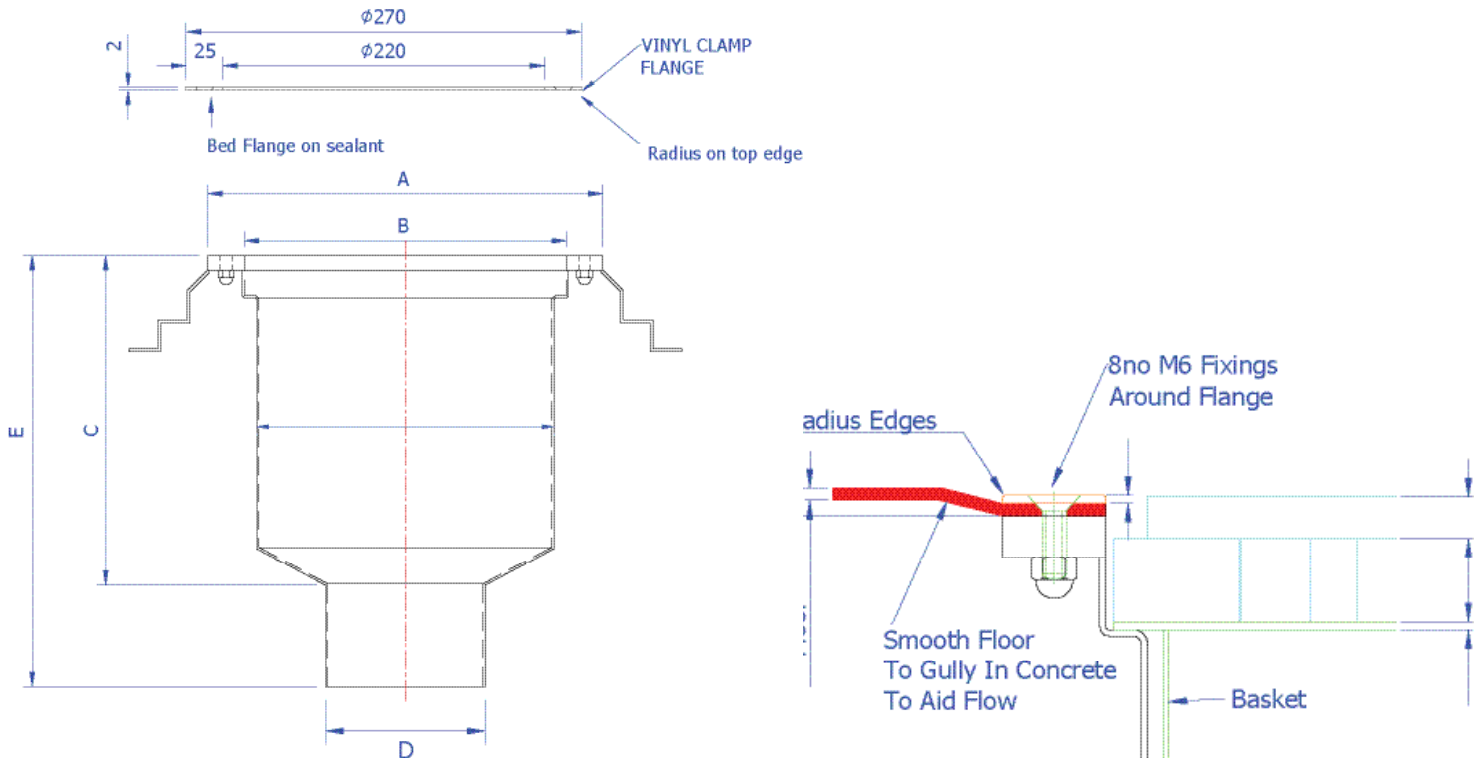
Suitable for hygienic environments accessed by medium load factory traffic.

The gully here is adapted for use with a vinyl floor and sandwich's the floor between the gully and separate top flange, for use with 3mm flooring, other sizes on request.

Technical Specification

- > Stainless steel of various thicknesses.
- > 50mm water trap.
- > Round opening with smooth cover.
- > Grade 304 stainless steel (British Standard 304S31, Euronorm 1.4301).
- > Compliant with EHEDG guidelines

MODEL	REF	GULLY DIMENSIONS					FLOW RATES	FACTA LOAD CLASS
		A	B	C	D	E		
SUMMIT 110	SGR110	270	200	235	110	295	3.0 Ltr/Sec	
SUMMIT & CON 110	SGR110C	270	200	235	110	295	3.0 Ltr/Sec	



The blue measurements indicate the variable dimensions shown in the chart above. All dimensions in mm.



ASPEN Summit Gully Round Top For Vinyl Floor

Load Class up to FACTA C250

ASPEN

Stainless

ASPEN Stainless hardworking stainless steel products for hardwearing environments: British engineered with a lifetime guarantee.

ASPEN Drainage System

As the UK based designer and manufacturer of all ASPEN Stainless, Canal Engineering is able to offer a full range of products to complete your drainage system and can customize any of its Units or manufacture complete bespoke drainage systems.

Key Benefits

The Summit Gully is manufactured with a drainable 50mm water trap and removable trash basket.

Maintenance

Stainless steel equipment should be occasionally thoroughly checked for retained deposits and concentrated fluid build up that causes corrosion.

Cleaning

Many factors affect the choice of cleaning method and frequency of its application. Suitable methods for stainless steel are: water and steam; mechanical non abrasive scrubbing; organic solvents and mild detergents.

ASPEN Drainage Installation

Canal Engineering offer supply only or full installation, with fully welded and polished joints, and commissioning. Canal Engineering also offer on-going annual inspection and maintenance contracts.

For advice regarding the most suitable ASPEN Stainless for you please contact our technical sales team today to discuss your requirements.

ASPEN Drainage Options

- > Available in grade 316 stainless steel (British Standard 316S31, Euronorm 1.4401).
- > A range of Gully Covers (see TD35).
- > Gully Membrane Flange (see TD66).
- > Gully Basket.
- > Condense.
- > Locking Gully Cover.
- > Gully Cover lifting tools.
- > Variable filtration mesh hole size.
- > For use with vinyl floors.

