

ASPEN Stainless hardworking stainless steel products for hardwearing environments:
British engineered with a lifetime guarantee.

Product Description

The standard Wall Cladding is used for protection of walls, corners and vulnerable areas in factories and offices.

Suitable for use in hygienic environments.

Technical Specification

- > 2500mm x 1250mm standard sheet size.
- > 1.5mm stainless steel.
- > 3mm aluminium.
- > Available in grade 304 stainless steel (British Standard 304S31, Euronorm 1.4301)

MODEL	REF	PROTECTION DIMENSIONS	
		SHEET THICKNESS	STANDARD SHEET SIZE
DULL POLISHED STAINLESS STEEL	CLAD1	1.5	2500 x 1250
TREADPLATE ALUMINIUM	CLAD2	3	2500 x 1250
ENGINE TURNED STAINLESS STEEL	CLAD3	1.5	2500 x 1250
EMBOSSED STAINLESS STEEL	CLAD4	1.5	2500 x 1250

DULL POLISHED



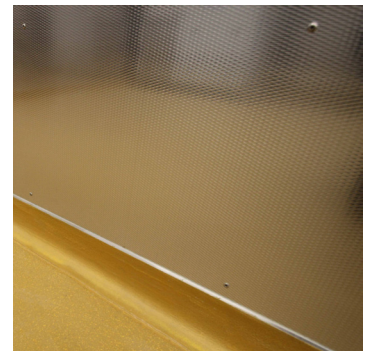
TREADPLATE



ENGINE TURNED



EMBOSSED



ASPEN Wall Cladding



ASPEN Stainless hardworking stainless steel products for hardwearing environments: British engineered with a lifetime guarantee.

ASPEN Protection System

As the UK based designer and manufacturer of all ASPEN Stainless, Canal Engineering is able to offer a full range of products to complete your protection system and can customize any of its Units or manufacture complete bespoke protection systems.

Key Benefits

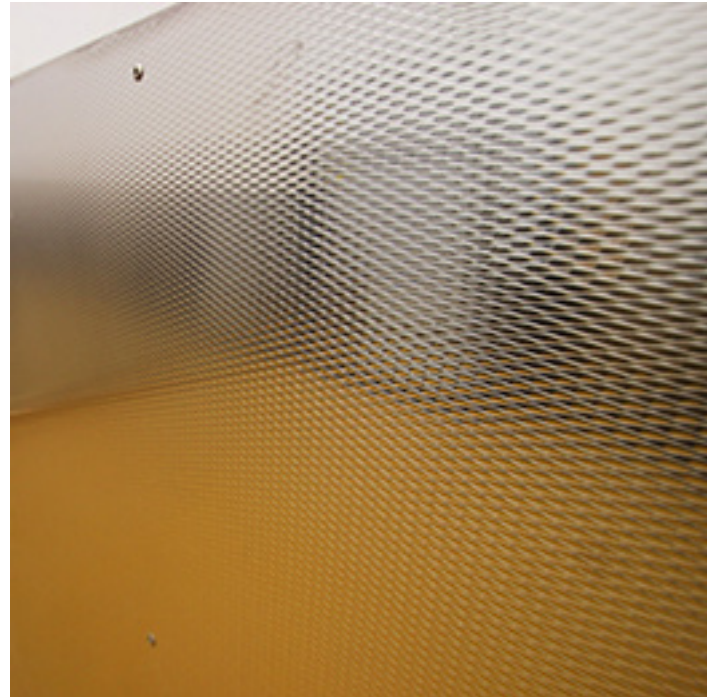
Provides added protection to areas of potential impact with particular attention being given to the aesthetics and finish of the detail.

Maintenance

Stainless steel equipment should be occasionally thoroughly checked for retained deposits and concentrated fluid build up that causes corrosion.

Cleaning

Many factors affect the choice of cleaning method and frequency of its application. Suitable methods for stainless steel are: water and steam; mechanical non abrasive scrubbing; organic solvents and mild detergents.



Wall Cladding Sample

ASPEN Protection Installation

Canal Engineering offer supply only or full installation, with fully welded and polished joints, and commissioning. Canal Engineering also offer on-going annual inspection and maintenance contracts.

For advice regarding the most suitable ASPEN Stainless for you please contact our technical sales team today to discuss your requirements.

ASPEN Protection Options

- > Sheet finish: Dull Polished Stainless Steel, Aluminium Tread Plate, Engine Turned Stainless Steel, and Embossed Stainless Steel.
- > Available in grade 316 stainless steel (British Standard 316S31, Euronorm 1.4401)

